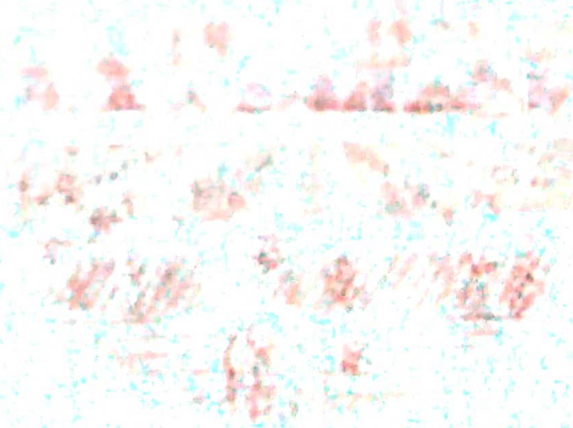
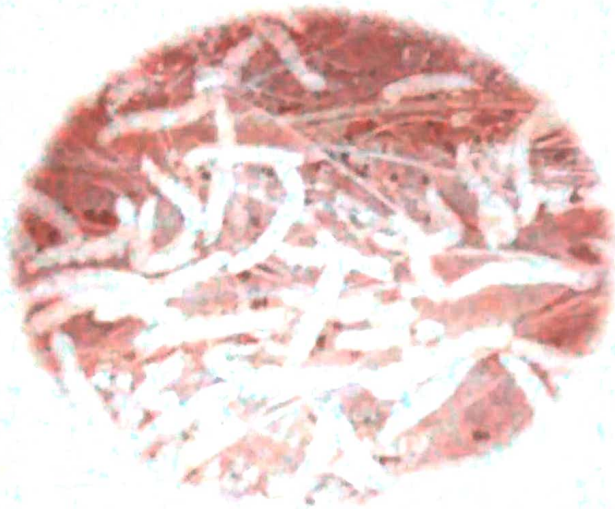




B.L.D.E. Associations

S.B. ARTS & K.C.P SCIENCE COLLEGE
VIJAYAPUR-586103



CAREER ORIENTED PROGRAMME-
SERICULTURE

DEPARTMENT OF ZOOLOGY

2017-18



B.L.D.E.ASSOCIATION'S
S. B. ARTS AND K. C. P. SCIENCE COLLEGE, VIJAYAPUR
ACCREDITED at 'A' Grade in 3rd Cycle by NAAC
Phone: (08352) – 261766, (08352) 262770 Extn. 2223, 2224
Fax: 08352 – 261766 E-mail: bldeasbkcp@gmail.com Web: www.bldeasbkcp.org



Date: 03.07.2017

DEPARTMENT OF ZOOLOGY
CAREER ORIENTED PROGRAMME (C.O.P)
SERICULTURE
NOTICE

It is hereby informed to all the students of B.Sc I semester that the Department of zoology is conducting **COP-Course in Sericulture** from 10 .07. 2017 .So the interested students can register their names before 08.07 2017. The classes will be conducted from Wednesday to Saturday from 5.00 - 6.00pm.

IQAC, Co-ordinator
S.B.Arts & K.C.P.Science College,
Vijayapur.

Head of the Department

Head of the
Department of Zoology
S.B Arts & K.C.P. Sc. College,
BIJAPUR


Principal,
S. B. Arts & KCP Sc. College,
Bijapur


B.L.D.E.As
S.B.Arts &K.C.P.Sci.College,Vijayapur
DEPARTMENT OF ZOOLOGY
CAREER ORIENTED PROGRAMME(C.O.P)
SERICULTURE

Time Table Year 2017-18

DAY	TIME
Wednesday	05:00-06:00pm
Thursday	05:00-06:00pm
Friday	05:00-06:00pm
Saturday	05:00-06:00pm


IQAC, Co-ordinator
S.B.Arts & K.C.P.Science College,
Vijayapur.


Head of the
Department of Zoology
S.B.Arts & K.C.P. Sc. College,
BIJAPUR.


Principal,
S. B. Arts & KCP Sc. College,
Bijapur

B.L.D.E ASSOCIATIONS
S.B. ARTS AND K.C.P. SCIENCE COLLEGE BIJAPUR
DEPARTMENT OF ZOOLOGY

FIRST YEAR COURSE

CERTIFICATE COURSE IN APPLIED SERICULTURE

The course will be of 30 credits. Each credit will have 15 hours workload
(450 Hours Syllabus)

Theory 200 marks, Practical – 100 marks, Dissertation and Project – 150 – Marks.

PAPER – I

IMPORTANCE OF SERICULTURE, SILK WORM BIOLOGY AND REARING.

- 1) History of sericulture, global silk production, silk industry as a cottage industry, rural employment potential earning through export of silk. 10 hrs.
- 2) Introduction to Mulberry and non mulberry silk worms based on optimism voltinism and mulberry silkworm races in Karnataka. 5 hrs.
- 3) Morphology of bombyx mori eggs, larva, pupa, and adult, and its life-cycle 5 hrs.
- 4) Sex differentiation in larva, pupa and adult Bombyx Mori. 5 hrs.
- 5) Silk worm rearing technology: rearing house, disinfection of rearing house, rearing equipments, type of disinfections, rearing of early age silkworm (Chawki rearing) rearing late age silk worms, different methods of rearing and environmental condition, feeding schedule and spacing. Advantages and disadvantages of different rearing house. 5 hrs.
- 6) Silk worm disease: Pebrine, Flacherie, Grasserie, and Muscardine, causative agents, preservation and control measures, pest and predatory insects of silkworm. 6 hrs.
- 7) Methods of mounting, harvesting and transportation and marketing of cocoons. 6 hrs
- 8) Silk reeling: character of cocoons, drying, stiffening, cocoon cooking different methods. Charaka reeling, semiautomatic and automatic reeling machines, reeling of silk, lacing, skeining and booking. 10 hrs.
- 9) Economics of silk worm rearing, production and silk reeling and silk byproduct. 6 hrs.

PAPER – II

MULBERRY CROP PRODUCTION

- 1) Food plants of mulberry and non- mulberry silk worms. 8 hrs
- 2) Soil, soil suitable of mulberry cultivation. Study of different types of manures and fertilizers. 15 hrs
- 3) Mulberry cultivation, selection and preparation of land planting, milching, intercultivation, manuring, weeding, and pruning of leaves. 12 hrs
- 4) Preparation of mulberry seeding cuttings, sampling and grafting. 8 hrs
- 5) A brief account of common weeds, diseases and pests of mulberry and their control measures. 10 hrs
- 6) Harvesting of mulberry and different method. 9 hrs
- 7) Economics of mulberry production, under rainfed irrigated condition. 8 hrs

PAPER - I PRACTICALS

- 1) Classification of mulberry and non mulberry silkworms.
- 2) Study of morphology of egg, larva, pupa, adult Bombyx Mori.
- 3) Study of life cycle of Bombyx Mori, identification of different stages in life cycle of Bombyx mori.
- 4) Dissection of digestive system, nervous system, reproductive system, and mounting of mouth parts, silk gland and spiracle in IV or V instar larva of Bombyx mori.
- 5) Study of the non mulberry silkworms.
- 6) Study of the different types of diseased silkworms.
- 7) Cocoon harvesting and marketing of cocoons.
- 8) Visit to mulberry fields and silkworm rearing centers, reeling centers. Tour report must be recorded in the journals.

PAPER - II PRACTICALS

- 1) Identification of different species of mulberry including high yielding varieties of mulberry.
- 2) Field cum laboratory work for mulberry cultivation.
Selection and preparation of land, planting materials and methods.
- 3) Identification and use of different rearing appliances.
- 4) Propagation of mulberry - seedlings, cuttings, samplings, grafting and layering.
- 5) Pruning and different methods of pruning.
- 6) Identification of weeds and pests of mulberry and their control.
- 7) A compulsory visit to mulberry fields and silkworm rearing centers.

FIELD WORK AND TRAINING

- 1) Compulsory one month of the job intensive training in sericulture farm/ training school or TSC/ CRC.
- 2) Each batch of students should establish and manage atleast half acre of mulberry garden. Starting from raising saplings.
- 3) Visits to progressive sericulturists and Govt. silk farms and individual interactions.

EXAMINATION PATTERN

	Final Marks	Internal Marks	Total Marks	Min Passing
I) Theory Paper	80	20	100	40
II) Practicals	40	10	50	20

Head of the
Department of Zoology,
B.Arts & K.C.P. Sc. College,
VIJAYAPUR.

IQAC, Co-ordinator
S.B.Arts & K.C.P.Science College,
Vijayapur.

Principal,
S.B. Arts and KCP Science Colla-
VIJAYAPUR

B.L.D.E. Associations
S.B. ARTS & K.C.P SCIENCE COLLEGE, VIJAYAPUR
 DEPARTMENT OF ZOOLOGY
 COP- SERICULTURE
List of students-2017-18

Sl.no	Roll no.	Name	
01	77	Pratiksha.Pattar	<i>Pattar</i>
02	83	Siddu.Gaddi	<i>S.G.</i>
03	94	Danamma.Hamndignur	<i>D.Hamndignur</i>
04	95	Bharati.Mulwad	<i>B.M.</i>
05	113	Krishnavati.Kundargi	<i>K.Kundargi</i>
06	116	Prashant.Kamble	<i>P.Kamble</i>
07	129	Ashwini.Rathod	<i>A.Rathod</i>
08	146	Shivanand.Biradar	<i>S.Biradar</i>
09	151	Ashwini.Hajeri	<i>Ashwini Hajeri</i>
10	158	Shantappa.Gundagi	<i>S.G.</i>
11	160	Hemant.Rayabagi	<i>H.Rayabagi</i>
12	169	Shobha.Nimbargi	<i>S.Nimbargi</i>
13	195	Naveen.Hosamani	<i>N.Hosamani</i>
14	196	Shrishti.Biradar	<i>S.B.</i>
15	197	Pooja.Kanamadi	<i>P.K.</i>
16	207	Sushma.Heralagi	<i>S.Heralagi</i>
17	222	Akash.Hiremth	<i>A.Hiremth</i>
18	249	Mahalaxmi	<i>M.H.</i>
19	261	Sushma.Biradar	<i>S.Biradar</i>
20	281	Parvati.Dalavayi	<i>P.Dalavayi</i>
21	297	Sachin.Sajjan	<i>Sachin Sajjan</i>
22	318	Basavaraj.Patil	<i>B.Patil</i>
23	348	Basavaraj.gobbi	<i>B.gobbi</i>
24	380	Akshaykumar.Tolanur	<i>A.T.</i>
25	398	Sharanu.Muragond	<i>S.Muragond</i>
26	433	Shankarayya.Hiremth	<i>S.Hiremth</i>
27	504	Swapna.Bandargatti	<i>S.B.</i>
28	516	Neha.Chougule	<i>N.C.</i>
29	528	Shambhavi.Bhushetti	<i>S.B.</i>
30	543	Apoorva.Hirolli	<i>A.Hirolli</i>

195
 Principal
 S. B. Arts & K.C.P. Sc. College
 Bijapur
 K.Patil
 Head of the
 Department of Zoology
 S.B. Arts & K.C.P. Sc. College
 BIJAPUR.

IQAC, Co-ordinator
 S.B.Arts & K.C.P.Science College,
 Vijayapur.

B.L.D.E. Association's
 SB ARTS & KCP Science College Bijapur
 DEPARTMENT OF ZOOLOGY
 COP - SERICULTURE
 Students Attendance - 2017-18

Sl.No	Roll No	Name	12/07	13/07	19/07	20/07	26/07	27/07	2/8	3/8	9/8	10/8	16/8	17/8	23/8	24/8	30/8	31/8	6/9	7/9
1	77	Pratiksha.Pattar	PP	PP	PP	PP	PP	PP	PP	PP	PP	PP	PP	PP	PP	PP	PP	PP	PP	PP
2	83	Siddu.Gaddi	SG	SG	SG	SG	SG	SG	SG	SG	SG	SG	SG	SG	SG	SG	SG	SG	SG	SG
3	94	Danamma.Hamndignur	DD	DD	DD	DD	DD	DD	DD	DD	DD	DD	DD	DD	DD	DD	DD	DD	DD	DD
4	95	Bharati.Mulwad	BM	BM	BM	BM	BM	BM	BM	BM	BM	BM	BM	BM	BM	BM	BM	BM	BM	BM
5	113	Krishnavati.Kundargi	KK	KK	KK	KK	KK	KK	KK	KK	KK	KK	KK	KK	KK	KK	KK	KK	KK	KK
6	116	Praşhant.Kamble	PK	PK	PK	PK	PK	PK	PK	PK	PK	PK	PK	PK	PK	PK	PK	PK	PK	PK
7	129	Ashwini.Rathod	AR	AR	AR	AR	AR	AR	AR	AR	AR	AR	AR	AR	AR	AR	AR	AR	AR	AR
8	146	Shivanand.Biradar	SB	SB	SB	SB	SB	SB	SB	SB	SB	SB	SB	SB	SB	SB	SB	SB	SB	SB
9	151	Ashwini.Hajeri	AH	AH	AH	AH	AH	AH	AH	AH	AH	AH	AH	AH	AH	AH	AH	AH	AH	AH
10	158	Shantappa.Gundagi	SG	SG	SG	SG	SG	SG	SG	SG	SG	SG	SG	SG	SG	SG	SG	SG	SG	SG
11	160	Hemant.Rayabagi	HR	HR	HR	HR	HR	HR	HR	HR	HR	HR	HR	HR	HR	HR	HR	HR	HR	HR
12	169	Shobha.Nimbargi	SN	Ab	SN	SN	SN	SN	SN	Ab	SN	SN	SN	SN	SN	Ab	SN	SN	SN	SN
13	195	Naveen.Hosamani	NH	NH	NH	NH	NH	NH	NH	NH	NH	NH	NH	NH	NH	NH	NH	NH	NH	NH
14	196	Shrishti.Biradar	SB	Ab	SB	SB	SB	Ab	SB	SB	SB	Ab	SB	SB	SB	SB	SB	SB	SB	SB
15	197	Pooja.Kanamadi	PK	PK	PK	PK	PK	PK	PK	PK	PK	PK	PK	PK	PK	PK	PK	PK	PK	PK
16	207	Sushma.Heralagi	SH	SH	SH	SH	SH	SH	SH	SH	SH	SH	SH	SH	SH	SH	SH	SH	SH	SH
17	222	Akash.Hiremath	AH	AH	AH	AH	AH	AH	AH	AH	AH	AH	AH	AH	AH	AH	AH	AH	AH	AH
18	249	Mahalaxmi	MA	MA	MA	MA	MA	MA	MA	MA	MA	MA	MA	MA	MA	MA	MA	MA	MA	MA
19	261	Sushma.Biradar	SB	SB	SB	SB	SB	SB	SB	SB	SB	SB	SB	SB	SB	SB	SB	SB	SB	SB
20	281	Parvati.Dalavayi	PD	PD	PD	PD	PD	PD	PD	PD	PD	PD	PD	PD	PD	PD	PD	PD	PD	PD
21	297	Sachin.Sajjan	SS	SS	SS	SS	SS	SS	SS	SS	SS	SS	SS	SS	SS	SS	SS	SS	SS	SS
22	318	Basavaraj.Patil	BP	BP	BP	BP	BP	BP	BP	BP	BP	BP	BP	BP	BP	BP	BP	BP	BP	BP
23	348	Basavaraj.gobbi	BG	Ab	BG	Ab	BG	BG	BG	BG	Ab	BG	BG	Ab	Ab	BG	BG	BG	BG	BG
24	380	Akshaykumar.Tolanur	AT	AT	AT	AT	AT	AT	AT	AT	AT	AT	AT	AT	AT	AT	AT	AT	AT	AT
25	398	Sharanu.Muragond	SM	SM	SM	SM	SM	SM	SM	SM	SM	SM	SM	SM	SM	SM	SM	SM	SM	SM
26	433	Shankarayya.Hiremath	SH	SH	SH	Ab	Ab	SH	SH	SH	SH	SH	SH	SH	SH	SH	SH	SH	SH	SH
27	504	Swapna.Bandargatti	BS	BS	BS	BS	Ab	Ab	BS	BS	BS	BS	Ab	BS	BS	BS	Ab	BS	BS	Ab
28	516	Neha.Chougule	NH	NH	NH	NH	NH	NH	NH	NH	NH	NH	NH	NH	NH	NH	NH	NH	NH	NH
29	528	Shambhavi.Bhushetti	SB	SB	SB	SB	SB	SB	SB	SB	SB	SB	SB	SB	SB	SB	SB	SB	SB	SB
30	543	Apoorva.Hirolli	AH	AH	AH	Ab	AH	Ab	AH	AH	AH	AH	AH	AH	AH	Ab	AH	Ab	AH	AH

Continued

B.L.D.E. Association's
SB ARTS & KCP Science College Bijapur
DEPARTMENT OF ZOOLOGY
COP - SERICULTURE
Students Attendance - 2017-18

I.No	Roll No	Name	13/9	14/9	20/9	21/9	27/9	28/9	4/10	5/10	11/10	12/10	8/10	19/10	25/10	26/10	1/11	2/11	8/11	9/11	
1	77	Pratiksha.Pattar	PP	PP	PP	PP	PP	PP	PP	PP	PP	PP	PP	PP	PP	PP	PP	PP	PP	PP	PP
2	83	Siddu.Gaddi	SG	SG	SG	SG	SG	SG	SG	SG	SG	SG	SG	SG	SG	SG	SG	SG	SG	SG	SG
3	94	Danamma.Hamndignur	DD	DD	DD	DD	DD	DD	DD	DD	DD	DD	DD	DD	DD	DD	DD	DD	DD	DD	DD
4	95	Bharati.Mulwad	BMS	BMS	BMS	BMS	BMS	BMS	BMS	BMS	BMS	BMS	BMS	BMS	BMS	BMS	BMS	BMS	BMS	BMS	BMS
5	113	Krishnavati.Kundargi	KK	KK	KK	KK	KK	KK	KK	KK	KK	KK	KK	KK	KK	KK	KK	KK	KK	KK	KK
6	116	Prashant.Kamble	PK	PK	PK	PK	PK	PK	PK	PK	PK	PK	PK	PK	PK	PK	PK	PK	PK	PK	PK
7	129	Ashwini.Rathod	AR	AR	AR	AR	AR	AR	AR	AR	AR	AR	AR	AR	AR	AR	AR	AR	AR	AR	AR
8	146	Shivanand.Biradar	SB	SB	SB	SB	SB	SB	SB	SB	SB	SB	SB	SB	SB	SB	SB	SB	SB	SB	SB
9	151	Ashwini.Hajeri	AH	AH	AH	AH	AH	AH	AH	AH	AH	AH	AH	AH	AH	AH	AH	AH	AH	AH	AH
10	158	Shantappa.Gundagi	SG	SG	SG	SG	SG	SG	SG	SG	SG	SG	SG	SG	SG	SG	SG	SG	SG	SG	SG
11	160	Hemant.Rayabagi	HR	HR	HR	HR	HR	HR	HR	HR	HR	HR	HR	HR	HR	HR	HR	HR	HR	HR	HR
12	169	Shobha.Nimbargi	SN	SN	SN	SN	SN	SN	SN	SN	SN	SN	SN	SN	SN	SN	SN	SN	SN	SN	SN
13	195	Naveen.Hosamani	NH	NH	NH	NH	NH	NH	NH	NH	NH	NH	NH	NH	NH	NH	NH	NH	NH	NH	NH
14	196	Shrishti.Biradar	SB	SB	SB	SB	SB	SB	SB	SB	SB	SB	SB	SB	SB	SB	SB	SB	SB	SB	SB
15	197	Pooja.Kanamadi	PK	PK	PK	PK	PK	PK	PK	PK	PK	PK	PK	PK	PK	PK	PK	PK	PK	PK	PK
16	207	Sushma.Heralagi	SH	SH	SH	SH	SH	SH	SH	SH	SH	SH	SH	SH	SH	SH	SH	SH	SH	SH	SH
17	222	Akash.Hiremath	AH	AH	AH	AH	AH	AH	AH	AH	AH	AH	AH	AH	AH	AH	AH	AH	AH	AH	AH
18	249	Mahalaxmi	MH	MH	MH	MH	MH	MH	MH	MH	MH	MH	MH	MH	MH	MH	MH	MH	MH	MH	MH
19	261	Sushma.Biradar	SB	SB	SB	SB	SB	SB	SB	SB	SB	SB	SB	SB	SB	SB	SB	SB	SB	SB	SB
20	281	Parvati.Dalavayi	PD	PD	PD	PD	PD	PD	PD	PD	PD	PD	PD	PD	PD	PD	PD	PD	PD	PD	PD
21	297	Sachin.Sajjan	SS	SS	SS	SS	SS	SS	SS	SS	SS	SS	SS	SS	SS	SS	SS	SS	SS	SS	SS
22	318	Basavaraj.Patil	BP	BP	BP	BP	BP	BP	BP	BP	BP	BP	BP	BP	BP	BP	BP	BP	BP	BP	BP
23	348	Basavaraj.gobbi	BG	BG	BG	BG	BG	BG	BG	BG	BG	BG	BG	BG	BG	BG	BG	BG	BG	BG	BG
24	380	Akshaykumar.Tolanur	AT	AT	AT	AT	AT	AT	AT	AT	AT	AT	AT	AT	AT	AT	AT	AT	AT	AT	AT
25	398	Sharanu.Muragond	SM	SM	SM	SM	SM	SM	SM	SM	SM	SM	SM	SM	SM	SM	SM	SM	SM	SM	SM
26	433	Shankarayya.Hiremath	SH	SH	SH	SH	SH	SH	SH	SH	SH	SH	SH	SH	SH	SH	SH	SH	SH	SH	SH
27	504	Swapna.Bandargatti	BS	BS	BS	BS	BS	BS	BS	BS	BS	BS	BS	BS	BS	BS	BS	BS	BS	BS	BS
28	516	Neha.Chougule	NC	NC	NC	NC	NC	NC	NC	NC	NC	NC	NC	NC	NC	NC	NC	NC	NC	NC	NC
29	528	Shambhavi.Bhushetti	SB	SB	SB	SB	SB	SB	SB	SB	SB	SB	SB	SB	SB	SB	SB	SB	SB	SB	SB
30	543	Apoorva.Hirolli	AH	AH	AH	AH	AH	AH	AH	AH	AH	AH	AH	AH	AH	AH	AH	AH	AH	AH	AH

continued

B.L.D.E.Association's
SB ARTS & KCP Science College Bijapur
DEPARTMENT OF ZOOLOGY
COP - SERICULTURE
Students Attendance - 2017-18

Sl.No	Roll No	Name	15/11	16/11	22/11	23/11	29/11	30/11	3/12	4/12	10/12	11/12	17/12	18/12	24/12	25/12	31/12	7/01	8/01	14/01
1	77	Pratiksha.Pattar	PP	PP	PP	PP	PP	PP	PP	PP	PP	PP	PP	PP	PP	PP	PP	PP	PP	PP
2	83	Siddu.Gaddi	SG	SG	SG	SG	SG	SG	SG	SG	SG	SG	SG	SG	SG	SG	SG	SG	SG	SG
3	94	Danamma.Hamndignur	PD	PD	PD	PD	PD	PD	PD	PD	PD	PD	PD	PD	PD	PD	PD	PD	PD	PD
4	95	Bharati.Mulwad	BM	BM	BM	BM	BM	BM	BM	BM	BM	BM	BM	BM	BM	BM	BM	BM	BM	BM
5	113	Krishnavati.Kundargi	KK	KK	KK	KK	KK	KK	KK	KK	KK	KK	KK	KK	KK	KK	KK	KK	KK	KK
6	116	Prashant.Kamble	PK	PK	PK	PK	PK	PK	PK	PK	PK	PK	PK	PK	PK	PK	PK	PK	PK	PK
7	129	Ashwini.Rathod	AR	AR	AR	AR	AR	AR	AR	AR	AR	AR	AR	AR	AR	AR	AR	AR	AR	AR
8	146	Shivanand.Biradar	SB	SB	SB	SB	SB	SB	SB	SB	SB	SB	SB	SB	SB	SB	SB	SB	SB	SB
9	151	Ashwini.Hajeri	AH	AH	AH	AH	AH	AH	AH	AH	AH	AH	AH	AH	AH	AH	AH	AH	AH	AH
10	158	Shantappa.Gundagi	SG	SG	SG	SG	SG	SG	SG	SG	SG	SG	SG	SG	SG	SG	SG	SG	SG	SG
11	160	Hemant.Rayabagi	HR	HR	HR	HR	Ab	HR	Ab	HR	HR	HR	HR	HR	HR	HR	Ab	HR	HR	HR
12	169	Shobha.Nimbargi	SN	SN	SN	SN	SN	SN	SN	SN	SN	SN	SN	SN	SN	SN	SN	SN	SN	SN
13	195	Naveen.Hosamani	NH	NH	NH	NH	NH	NH	NH	NH	NH	NH	NH	NH	NH	NH	NH	NH	NH	NH
14	196	Shrishti.Biradar	SB	SB	SB	Ab	SB	SB	SB	Ab	SB	SB	SB	SB	SB	Ab	SB	SB	SB	SB
15	197	Pooja.Kanamadi	PK	PK	PK	PK	PK	PK	PK	PK	PK	PK	PK	PK	PK	PK	PK	PK	PK	PK
16	207	Sushma.Heralagi	SH	SH	SH	SH	SH	SH	SH	SH	SH	SH	SH	SH	SH	SH	SH	SH	SH	SH
17	222	Akash.Hiremath	AH	AH	AH	AH	AH	AH	AH	AH	AH	AH	AH	AH	AH	AH	AH	AH	AH	AH
18	249	Mahalaxmi	ML	ML	ML	ML	ML	ML	ML	ML	ML	ML	ML	ML	ML	ML	ML	ML	ML	ML
19	261	Sushma.Biradar	SB	SB	SB	SB	SB	SB	SB	SB	SB	SB	SB	SB	SB	SB	SB	SB	SB	SB
20	281	Parvati.Dalavayi	PD	PD	PD	PD	PD	PD	PD	PD	PD	PD	PD	PD	PD	PD	PD	PD	PD	PD
21	297	Sachin.Sajjan	SS	SS	SS	SS	SS	SS	SS	SS	SS	SS	SS	SS	SS	SS	SS	SS	SS	SS
22	318	Basavaraj.Patil	BP	BP	BP	BP	BP	BP	BP	BP	BP	BP	BP	BP	BP	BP	BP	BP	BP	BP
23	348	Basavaraj.gobbi	BG	Ab	BG	BG	Ab	BG	Ab	BG	Ab	BG	Ab	BG	Ab	BG	Ab	BG	Ab	BG
24	380	Akshaykumar.Tolanur	AT	AT	AT	Ab	AT	AT	Ab	AT	Ab	AT	Ab	AT	Ab	AT	Ab	AT	Ab	AT
25	398	Sharanu.Muragond	SM	SM	SM	SM	SM	SM	SM	SM	SM	SM	SM	SM	SM	SM	SM	SM	SM	SM
26	433	Shankarayya.Hiremath	SH	SH	SH	Ab	SH	Ab	SH	Ab	SH	Ab	SH	Ab	SH	Ab	SH	Ab	SH	Ab
27	504	Swapna.Bandargatti	BS	BS	Ab	Ab	BS	Ab	BS	Ab	BS	Ab	BS	Ab	BS	Ab	BS	Ab	BS	Ab
28	516	Neha.Chougule	NC	NC	NC	NC	NC	NC	NC	NC	NC	NC	NC	NC	NC	NC	NC	NC	NC	NC
29	528	Shambhavi.Bhushetti	SB	SB	SB	SB	SB	SB	SB	SB	SB	SB	SB	SB	SB	SB	SB	SB	SB	SB
30	543	Apoorva.Hirolli	AH	AH	AH	Ab	AH	AH	Ab	AH	Ab	AH	Ab	AH	Ab	AH	Ab	AH	Ab	AH


continued

B.L.D.E. Association's
SB ARTS & KCP Science College Bijapur
DEPARTMENT OF ZOOLOGY
COP - SERICULTURE
Students Attendance - 2017-18

I.No	Roll No	Name	15/02	21/02	22/02	28/02	7/03	08/03	14/03	15/03	21/03	22/03	28/03					
1	77	Pratiksha.Pattar	PP	PP	PP	PP	PP	PP	PP	PP	PP	PP	PP					
2	83	Siddu.Gaddi	SG	SG	SG	SG	SG	SG	SG	SG	SG	SG	SG					
3	94	Danamma.Hamndignur	DD	DD	DD	DD	DD	DD	DD	DD	DD	DD	DD					
4	95	Bharati.Mulwad	BM	BM	BM	BM	BM	BM	BM	BM	BM	BM	BM					
5	113	Krishnavati.Kundargi	KK	KK	KK	KK	KK	KK	KK	KK	KK	KK	KK					
6	116	Prashant.Kamble	PK	PK	PK	PK	PK	PK	PK	PK	PK	PK	PK					
7	129	Ashwini.Rathod	AR	AR	AR	AR	AR	AR	AR	AR	AR	AR	AR					
8	146	Shivanand.Biradar	SB	SB	SB	SB	SB	SB	SB	SB	SB	SB	SB					
9	151	Ashwini.Hajeri	AH	AH	AH	AH	AH	AH	AH	AH	AH	AH	AH					
10	158	Shantappa.Gundagi	SG	SG	SG	SG	SG	SG	SG	SG	SG	SG	SG					
11	160	Hemant.Rayabagi	HR	HR	HR	Ab	HR	HR	HR	HR	Ab	HR	HR					
12	169	Shobha.Nimbargi	SN	SN	SN	SN	SN	SN	SN	SN	SN	SN	SN					
13	195	Naveen.Hosamani	NH	NH	NH	NH	NH	NH	NH	NH	NH	NH	NH					
14	196	Shrishti.Biradar	S	Ab	S	S	S	Ab	S	S	S	S	S					
15	197	Pooja.Kanamadi	PK	PK	PK	PK	PK	PK	PK	PK	PK	PK	PK					
16	207	Sushma.Heralagi	SH	SH	SH	SH	SH	SH	SH	SH	SH	SH	SH					
17	222	Akash.Hiremath	AH	AH	AH	AH	AH	AH	AH	AH	AH	AH	AH					
18	249	Mahalaxmi	MH	MH	MH	MH	MH	MH	MH	MH	MH	MH	MH					
19	261	Sushma.Biradar	S	S	S	S	S	S	S	S	S	S	S					
20	281	Parvati.Dalavayi	PD	PD	PD	PD	PD	PD	PD	PD	PD	PD	PD					
21	297	Sachin.Sajjan	SS	SS	SS	SS	SS	SS	SS	SS	SS	SS	SS					
22	318	Basavaraj.Patil	BP	BP	BP	BP	BP	BP	BP	BP	BP	BP	BP					
23	348	Basavaraj.gobbi	BG	BG	Ab	Ab	BG	BG	Ab	BG	Ab	BG	Ab					
24	380	Akshaykumar.Tolanur	AT	AT	AT	AT	AT	Ab	AT	Ab	AT	Ab	AT					
25	398	Sharanu.Muragond	SH	SH	SH	SH	SH	SH	SH	SH	SH	SH	SH					
26	433	Shankarayya.Hiremath	SH	HR	HR	HR	Ab	Ab	HR	HR	HR	HR	HR					
27	504	Swapna.Bandargatti	BS	BS	BS	BS	B	Ab	BS	B	Ab	BS	Ab					
28	516	Neha.Chougule	NH	NH	NH	NH	NH	NH	NH	NH	NH	NH	NH					
29	528	Shambhavi.Bhushetti	SB	SB	SB	SB	SB	SB	SB	SB	SB	SB	SB					
30	543	Apoorva.Hirolli	AH	AH	Ab	Ab	AH	AH	AH	Ab	AH	Ab	AH					

Hpatil
Head of the
Department of Zoology,
S.B.Arts & K.C.P. Sc. College,
VIJAYAPUR.


IQAC, Co-ordinator
S.B.Arts & K.C.P.Science College,
Vijayapur.


Principal,
S.B. Arts and KCP Science College,
VIJAYAPUR

B.L.D.E. Association's
 SB ARTS & KCP Science College Bijapur
 DEPARTMENT OF ZOOLOGY
 COP - SERICULTURE
 Students Attendance - 2017-18

Paper - II

Sl.No	Roll No	Name	14/7	15/7	21/7	22/7	28/7	29/7	4/8	5/8	11/8	12/8	13/8	19/8	25/8	26/8	1/9	2/9	8/9	9/9	
1	77	Pratiksha.Pattar	PP	PP	PP	PP	PP	PP	PP	PP	PP	PP	PP	PP	PP	PP	PP	PP	PP	PP	PP
2	83	Siddu.Gaddi	SG	SG	SG	SG	SG	SG	SG	SG	SG	SG	SG	SG	SG	SG	SG	SG	SG	SG	SG
3	94	Danamma.Hamndignur	DD	DD	DD	DD	DD	DD	DD	DD	DD	DD	DD	DD	DD	DD	DD	DD	DD	DD	DD
4	95	Bharati.Mulwad	BM	BM	BM	BM	BM	BM	BM	BM	BM	BM	BM	BM	BM	BM	BM	BM	BM	BM	BM
5	113	Krishnavati.Kundargi	KK	KK	KK	KK	KK	KK	KK	KK	KK	KK	KK	KK	KK	KK	KK	KK	KK	KK	KK
6	116	Prashant.Kamble	PK	PK	PK	PK	PK	PK	PK	PK	PK	PK	PK	PK	PK	PK	PK	PK	PK	PK	PK
7	129	Ashwini.Rathod	AR	AR	AR	AR	AR	AR	AR	AR	AR	AR	AR	AR	AR	AR	AR	AR	AR	AR	AR
8	146	Shivanand.Biradar	SB	SB	SB	SB	SB	SB	SB	SB	SB	SB	SB	SB	SB	SB	SB	SB	SB	SB	SB
9	151	Ashwini.Hajeri	AH	AH	AH	AH	AH	AH	AH	AH	AH	AH	AH	AH	AH	AH	AH	AH	AH	AH	AH
10	158	Shantappa.Gundagi	SG	SG	SG	SG	SG	SG	SG	SG	SG	SG	SG	SG	SG	SG	SG	SG	SG	SG	SG
11	160	Hemant.Rayabagi	HR	HR	HR	HR	HR	HR	HR	HR	HR	HR	HR	HR	HR	HR	HR	HR	HR	HR	HR
12	169	Shobha.Nimbargi	SN	SN	SN	SN	SN	SN	SN	SN	SN	SN	SN	SN	SN	SN	SN	SN	SN	SN	SN
13	195	Naveen.Hosamani	NH	NH	NH	NH	NH	NH	NH	NH	NH	NH	NH	NH	NH	NH	NH	NH	NH	NH	NH
14	196	Shrishti.Biradar	SR	SR	SR	SR	SR	SR	SR	SR	SR	SR	SR	SR	SR	SR	SR	SR	SR	SR	SR
15	197	Pooja.Kanamadi	PK	PK	PK	PK	PK	PK	PK	PK	PK	PK	PK	PK	PK	PK	PK	PK	PK	PK	PK
16	207	Sushma.Heralagi	SH	SH	SH	SH	SH	SH	SH	SH	SH	SH	SH	SH	SH	SH	SH	SH	SH	SH	SH
17	222	Akash.Hiremath	AH	AH	AH	AH	AH	AH	AH	AH	AH	AH	AH	AH	AH	AH	AH	AH	AH	AH	AH
18	249	Mahalaxmi	ML	ML	ML	ML	ML	ML	ML	ML	ML	ML	ML	ML	ML	ML	ML	ML	ML	ML	ML
19	261	Sushma.Biradar	SB	SB	SB	SB	SB	SB	SB	SB	SB	SB	SB	SB	SB	SB	SB	SB	SB	SB	SB
20	281	Parvati.Dalavayi	PD	PD	PD	PD	PD	PD	PD	PD	PD	PD	PD	PD	PD	PD	PD	PD	PD	PD	PD
21	297	Sachin.Sajjan	SS	SS	SS	SS	SS	SS	SS	SS	SS	SS	SS	SS	SS	SS	SS	SS	SS	SS	SS
22	318	Basavaraj.Patil	BP	BP	BP	BP	BP	BP	BP	BP	BP	BP	BP	BP	BP	BP	BP	BP	BP	BP	BP
23	348	Basavaraj.gobbi	BG	BG	BG	BG	BG	BG	BG	BG	BG	BG	BG	BG	BG	BG	BG	BG	BG	BG	BG
24	380	Akshaykumar.Tolanur	AT	AT	AT	AT	AT	AT	AT	AT	AT	AT	AT	AT	AT	AT	AT	AT	AT	AT	AT
25	398	Sharanu.Muragond	SM	SM	SM	SM	SM	SM	SM	SM	SM	SM	SM	SM	SM	SM	SM	SM	SM	SM	SM
26	433	Shankarayya.Hiremath	SH	SH	SH	SH	SH	SH	SH	SH	SH	SH	SH	SH	SH	SH	SH	SH	SH	SH	SH
27	504	Swapna.Bandargatti	SB	SB	SB	SB	SB	SB	SB	SB	SB	SB	SB	SB	SB	SB	SB	SB	SB	SB	SB
28	516	Neha.Chougule	NC	NC	NC	NC	NC	NC	NC	NC	NC	NC	NC	NC	NC	NC	NC	NC	NC	NC	NC
29	528	Santosh.Bhusinetti	SB	SB	SB	SB	SB	SB	SB	SB	SB	SB	SB	SB	SB	SB	SB	SB	SB	SB	SB
30	543	Apoorva.Hirolli	AH	AH	AH	AH	AH	AH	AH	AH	AH	AH	AH	AH	AH	AH	AH	AH	AH	AH	AH

Continued

B.L.D.E. Association's
SB ARTS & KCP Science College Bijapur
DEPARTMENT OF ZOOLOGY
COP - SERICULTURE
Students Attendance - 2017-18

I.No	Roll No	Name	15/9	16/9	22/9	23/9	29/9	30/9	6/10	7/10	13/10	14/10	20/10	21/10	27/10	28/10	3/11	4/11	10/11	11/11
1	77	Pratiksha.Pattar	PP	PP	PP	PP	PP	PP	PP	PP	PP	PP	PP	PP	PP	PP	PP	PP	PP	PP
2	83	Siddu.Gaddi	SG	SG	SG	SG	SG	SG	SG	SG	SG	SG	SG	SG	SG	SG	SG	SG	SG	SG
3	94	Danamma.Hamndignur	DD	DD	DD	DD	DD	DD	DD	DD	DD	DD	DD	DD	DD	DD	DD	DD	DD	DD
4	95	Bharati.Mulwad	BM	BM	BM	BM	BM	BM	BM	BM	BM	BM	BM	BM	BM	BM	BM	BM	BM	BM
5	113	Krishnavati.Kundargi	KK	KK	KK	KK	KK	KK	KK	KK	KK	KK	KK	KK	KK	KK	KK	KK	KK	KK
6	116	Prashant.Kamble	PK	PK	PK	PK	PK	PK	PK	PK	PK	PK	PK	PK	PK	PK	PK	PK	PK	PK
7	129	Ashwini.Rathod	AR	AR	AR	AR	AR	AR	AR	AR	AR	AR	AR	AR	AR	AR	AR	AR	AR	AR
8	146	Shivanand.Biradar	SB	SB	SB	SB	SB	SB	SB	SB	SB	SB	SB	SB	SB	SB	SB	SB	SB	SB
9	151	Ashwini.Hajeri	AH	AH	AH	AH	AH	AH	AH	AH	AH	AH	AH	AH	AH	AH	AH	AH	AH	AH
10	158	Shantappa.Gundagi	SG	SG	SG	SG	SG	SG	SG	SG	SG	SG	SG	SG	SG	SG	SG	SG	SG	SG
11	160	Hemant.Rayabagi	H2	H2	AB	H2	H2	H2	H2	H2	AB	H2	H2	H2	H2	AB	H2	H2	H2	H2
12	169	Shobha.Nimbargi	SN	SN	SN	SN	SN	SN	SN	SN	SN	SN	SN	SN	SN	SN	SN	SN	SN	SN
13	195	Naveen.Hosamani	NH	NH	NH	NH	NH	NH	NH	NH	NH	NH	NH	NH	NH	NH	NH	NH	NH	NH
14	196	Shrishti.Biradar	SB	SB	SB	SB	SB	AB	SB	SB	AB	SB	SB	SB	SB	SB	AB	SB	SB	SB
15	197	Pooja.Kanamadi	PK	PK	PK	PK	PK	PK	PK	PK	PK	PK	PK	PK	PK	PK	PK	PK	PK	PK
16	207	Sushma.Heralagi	SH	SH	SH	SH	SH	SH	SH	SH	SH	SH	SH	SH	SH	SH	SH	SH	SH	SH
17	222	Akash.Hiremath	AH	AH	AH	AH	AH	AH	AH	AH	AH	AH	AH	AH	AH	AH	AH	AH	AH	AH
18	249	Mahalaxmi	MH	MH	MH	MH	MH	MH	MH	MH	MH	MH	MH	MH	MH	MH	MH	MH	MH	MH
19	261	Sushma.Biradar	SB	SB	SB	SB	SB	SB	SB	SB	SB	SB	SB	SB	SB	SB	SB	SB	SB	SB
20	281	Parvati.Dalavayi	PD	PD	PD	PD	PD	PD	PD	PD	PD	PD	PD	PD	PD	PD	PD	PD	PD	PD
21	297	Sachin.Sajjan	SS	SS	SS	SS	SS	SS	SS	SS	SS	SS	SS	SS	SS	SS	SS	SS	SS	SS
22	318	Basavaraj.Patil	BP	BP	BP	BP	BP	BP	BP	BP	BP	BP	BP	BP	BP	BP	BP	BP	BP	BP
23	348	Basavaraj.gobbi	BG	BG	BG	AB	BG	BG	BG	BG	BG	BG	AB	AB	BG	BG	BG	BG	BG	BG
24	380	Akshaykumar.Tolanur	AT	AB	AT	AT	AT	AT	AB	AT	AT	AT	AB	AB	AT	AT	AT	AT	AT	AT
25	398	Sharanu.Muragond	SM	SM	SM	SM	SM	SM	SM	SM	SM	SM	SM	SM	SM	SM	SM	SM	SM	SM
26	433	Shankarayya.Hiremath	SH	SH	AB	SH	SH	SH	SH	SH	AB	SH	SH	SH	SH	SH	SH	SH	AB	SH
27	504	Swapna.Bandargatti	SB	B	SB	B	B	B	AB	B	B	B	B	B	B	B	B	B	B	B
28	516	Neha.Chougule	NH	NH	NH	NH	NH	NH	NH	NH	NH	NH	NH	NH	NH	NH	NH	NH	NH	NH
29	528	Shambhavi.Bhushetti	SB	SB	SB	SB	SB	SB	SB	SB	SB	SB	SB	SB	SB	SB	SB	SB	SB	SB
30	543	Apoorva.Hirolli	AH	AH	AH	AB	AH	AH	AH	AH	AH	AH	AB	AH	AH	AH	AH	AH	AB	AH

continued

B.L.D.E. Association's
SB ARTS & KCP Science College Bijapur
DEPARTMENT OF ZOOLOGY
COP - SERICULTURE
Students Attendance - 2017-18

Sl.No	Roll No	Name	17/11	18/11	24/11	25/11	1/12	2/12	5/12	6/12	12/12	13/12	19/12	20/12	26/12	27/12	02/1	03/1	9/1	10/1	
1	77	Pratiksha.Pattar	PP	PP	PP	PP	PP	PP	PP	PP	PP	PP	PP	PP	PP	PP	PP	PP	PP	PP	PP
2	83	Siddu.Gaddi	SG	SG	SG	SG	SG	SG	SG	SG	SG	SG	SG	SG	SG	SG	SG	SG	SG	SG	SG
3	94	Danamma.Hamndignur	DD	DD	DD	DD	DD	DD	DD	DD	DD	DD	DD	DD	DD	DD	DD	DD	DD	DD	DD
4	95	Bharati.Mulwad	BM	BM	BM	BM	BM	BM	BM	BM	BM	BM	BM	BM	BM	BM	BM	BM	BM	BM	BM
5	113	Krishnavati.Kundargi	KK	KK	KK	KK	KK	KK	KK	KK	KK	KK	KK	KK	KK	KK	KK	KK	KK	KK	KK
6	116	Prashant.Kamble	PK	PK	PK	PK	PK	PK	PK	PK	PK	PK	PK	PK	PK	PK	PK	PK	PK	PK	PK
7	129	Ashwini.Rathod	AR	AR	AR	AR	AR	AR	AR	AR	AR	AR	AR	AR	AR	AR	AR	AR	AR	AR	AR
8	146	Shivanand.Biradar	SB	SB	SB	SB	SB	SB	SB	SB	SB	SB	SB	SB	SB	SB	SB	SB	SB	SB	SB
9	151	Ashwini.Hajeri	AH	AH	AH	AH	AH	AH	AH	AH	AH	AH	AH	AH	AH	AH	AH	AH	AH	AH	AH
10	158	Shantappa.Gundagi	SG	SG	SG	SG	SG	SG	SG	SG	SG	SG	SG	SG	SG	SG	SG	SG	SG	SG	SG
11	160	Hemant.Rayabagi	HR	HR	HR	HR	HR	HR	HR	HR	HR	HR	HR	HR	HR	HR	HR	HR	HR	HR	HR
12	169	Shobha.Nimbargi	SN	SN	SN	SN	SN	SN	SN	SN	SN	SN	SN	SN	SN	SN	SN	SN	SN	SN	SN
13	195	Naveen.Hosamani	NH	NH	NH	NH	NH	NH	NH	NH	NH	NH	NH	NH	NH	NH	NH	NH	NH	NH	NH
14	196	Shrishti.Biradar	SB	SB	SB	SB	AB	SB	SB	SB	SB	SB	SB	SB	AB	SB	SB	SB	SB	SB	SB
15	197	Pooja.Kanamadi	PK	PK	PK	PK	PK	PK	PK	PK	PK	PK	PK	PK	PK	PK	PK	PK	PK	PK	PK
16	207	Sushma.Heralagi	SH	SH	SH	SH	SH	SH	SH	SH	SH	SH	SH	SH	SH	SH	SH	SH	SH	SH	SH
17	222	Akash.Hiremath	AH	AH	AH	AH	AH	AH	AH	AH	AH	AH	AH	AH	AH	AH	AH	AH	AH	AH	AH
18	249	Mahalaxmi	MH	MH	MH	MH	MH	MH	MH	MH	MH	MH	MH	MH	MH	MH	MH	MH	MH	MH	MH
19	261	Sushma.Biradar	SB	SB	SB	SB	SB	SB	SB	SB	SB	SB	SB	SB	SB	SB	SB	SB	SB	SB	SB
20	281	Parvati.Dalavayi	PD	PD	PD	PD	PD	PD	PD	PD	PD	PD	PD	PD	PD	PD	PD	PD	PD	PD	PD
21	297	Sachin.Sajjan	SS	SS	SS	SS	SS	SS	SS	SS	SS	SS	SS	SS	SS	SS	SS	SS	SS	SS	SS
22	318	Basavaraj.Patil	BP	BP	BP	BP	BP	BP	BP	BP	BP	BP	BP	BP	BP	BP	BP	BP	BP	BP	BP
23	348	Basavaraj.gobbi	BG	BG	BG	BG	BG	BG	BG	BG	BG	AB	BG	BG	BG	BG	AB	BG	BG	BG	BG
24	380	Akshaykumar.Tolanur	AT	AT	AT	AT	AT	AB	AT	AT	AT	AT	AT	AT	AT	AT	AT	AT	AB	AT	AT
25	398	Sharanu.Muragond	SM	SM	SM	SM	SM	SM	SM	SM	SM	SM	SM	SM	SM	SM	SM	SM	SM	SM	SM
26	433	Shankarayya.Hiremath	SH	SH	SH	SH	AB	SH	SH	SH	SH	SH	AB	SH	SH	SH	SH	SH	SH	SH	SH
27	504	Swapna.Bandargatti	BS	BS	BS	BS	BS	BS	BS	AB	BS	BS	BS	BS	BS	BS	BS	AB	BS	BS	BS
28	516	Neha.Chougule	NH	NH	NH	NH	NH	NH	NH	NH	NH	NH	NH	NH	NH	NH	NH	NH	NH	NH	NH
29	528	Shambhavi.Bhushetti	SB	SB	SB	SB	SB	SB	SB	SB	SB	SB	SB	SB	SB	SB	SB	SB	SB	SB	SB
30	543	Apoorva.Hirolli	AH	AH	AH	AH	AB	AH	AH	AH	AH	AH	AB	AH	AH	AH	AH	AB	AH	AH	AH

continued

B.L.D.E.Association's
SB ARTS & KCP Science College Bijapur
DEPARTMENT OF ZOOLOGY
COP - SERICULTURE
Students Attendance - 2017-18

I.No	Roll No	Name	1/2	1 1/2	2 1/2	2 1/2	02/3	03/3	9/3	10/3	16/3	17/3								
1	77	Pratiksha.Pattar	PP	PP	PP	PP	PP	PP	PP	PP	PP	PP								
2	83	Siddu.Gaddi	SG	SG	SG	SG	SG	SG	SG	SG	SG	SG								
3	94	Danamma.Hamndignur	DD	DD	DD	DD	DD	DD	DD	DD	DD	DD								
4	95	Bharati.Mulwad	BM	BM	BM	BM	BM	BM	BM	BM	BM	BM								
5	113	Krishnavati.Kundargi	KK	KK	KK	KK	KK	KK	KK	KK	KK	KK								
6	116	Prashant.Kamble	PK	PK	PK	PK	PK	PK	PK	PK	PK	PK								
7	129	Ashwini.Rathod	AR	AR	AR	AR	AR	AR	AR	AR	AR	AR								
8	146	Shivanand.Biradar	SB	SB	SB	SB	SB	SB	SB	SB	SB	SB								
9	151	Ashwini.Hajeri	AH	AH	AH	AH	AH	AH	AH	AH	AH	AH								
10	158	Shantappa.Gundagi	SG	SG	SG	SG	SG	SG	SG	SG	SG	SG								
11	160	Hemant.Rayabagi	HR	Ab	HR	Ab	HR	HR	HR	Ab	HR	HR								
12	169	Shobha.Nimbargi	SN	SN	SN	SN	SN	SN	SN	SN	SN	SN								
13	195	Naveen.Hosamani	NH	NH	NH	NH	NH	NH	NH	NH	NH	NH								
14	196	Shrishti.Biradar	SB	SB	Ab	SB	SB	Ab	SB	SB	Ab	SB								
15	197	Pooja.Kanamadi	PK	PK	PK	PK	PK	PK	PK	PK	PK	PK								
16	207	Sushma.Heralagi	SH	SH	SH	SH	SH	SH	SH	SH	SH	SH								
17	222	Akash.Hiremath	AH	AH	AH	AH	AH	AH	AH	AH	AH	AH								
18	249	Mahalaxmi	MH	MH	MH	MH	MH	MH	MH	MH	MH	MH								
19	261	Sushma.Biradar	SB	SB	SB	SB	SB	SB	SB	SB	SB	SB								
20	281	Parvati.Dalavayi	PD	PD	PD	PD	PD	PD	PD	PD	PD	PD								
21	297	Sachin.Sajjan	SS	SS	SS	SS	SS	SS	SS	SS	SS	SS								
22	318	Basavaraj.Patil	BP	BP	BP	BP	BP	BP	BP	BP	BP	BP								
23	348	Basavaraj.gobbi	BG	BG	BG	BG	BG	BG	BG	BG	BG	BG								
24	380	Akshaykumar.Tolanur	AT	AT	AT	AT	AT	AT	AT	AT	AT	AT								
25	398	Sharanu.Muragond	SM	SM	SM	SM	SM	SM	SM	SM	SM	SM								
26	433	Shankarayya.Hiremath	SH	SH	SH	SH	Ab	Ab	SH	SH	SH	Ab								
27	504	Swapna.Bandargatti	B	B	Ab	B	B	Ab	B	B	B	Ab								
28	516	Neha.Ch ugule	NC	NC	NC	NC	NC	NC	NC	NC	NC	NC								
29	528	Shambhavi.Bhushetti	SB	SB	SB	SB	SB	SB	SB	SB	SB	SB								
30	543	Apoorva.Hirolli	AH	AH	Ab	AH	AH	AH	Ab	AH	AH	AH								

Apali
Head of the
Department of Zoology,
S.B.Arts & K.C.P. Sc. Coll.
VIJAYAPUR.

IQAC, Co-ordinator
S.B.Arts & K.C.P. Science College,
Vijayapur.

W
Principal,
S.B. Arts and KCP Science College,
VIJAYAPUR

B.L.D.E. Association's
SB ARTS & KCP Science College Bijapur
DEPARTMENT OF ZOOLOGY
COP - SERICULTURE
Students Attendance - 2017-18
Practical

Sl.No	Roll No	Name	23/7	6/8	20/8	3/9	17/9	1/10	15/10	29/10	12/11	26/11		
1	77	Pratiksha.Pattar	PP	PP	PP	PP	PP	PP	PP	PP	PP	PP		
2	83	Siddu.Gaddi	SD	SD	SD	SD	SD	SD	SD	SD	SD	SD		
3	94	Danamma.Hamndignur	DD	DD	DD	DD	DD	DD	DD	DD	DD	DD		
4	95	Bharati.Mulwad	BM	BM	BM	AB	AB	BM	AB	BM	BM	BM		
5	113	Krishnavati.Kundargi	KK	KK	KK	KK	KK	KK	KK	KK	KK	KK		
6	116	Prashant.Kamble	PK	PK	PK	PK	PK	PK	PK	PK	PK	PK		
7	129	Ashwini.Rathod	AR	AR	AR	AR	AR	AR	AR	AR	AR	AR		
8	146	Shivanand.Biradar	SB	SB	SB	SB	SB	SB	SB	SB	SB	SB		
9	151	Ashwini.Hajeri	AH	AH	AH	AH	AH	AH	AH	AH	AH	AH		
10	158	Shantappa.Gundagi	SG	SG	SG	SG	SG	SG	SG	SG	SG	SG		
11	160	Hemant.Rayabagi	HR	HR	AB	HR	HR	AB	HR	HR	HR	HR		
12	169	Shobha.Nimbargi	SN	SN	SN	SN	SN	SN	SN	SN	SN	SN		
13	195	Naveen.Hosamani	NH	NH	NH	NH	NH	NH	NH	NH	NH	NH		
14	196	Shrishti.Biradar	SB	SB	SB	SB	SB	SB	AB	SB	SB	SB		
15	197	Pooja.Kanamadi	PK	PK	PK	PK	PK	PK	PK	PK	PK	PK		
16	207	Sushma.Heralagi	SH	SH	SH	SH	SH	SH	SH	SH	SH	SH		
17	222	Akash.Hiremath	AH	AH	AH	AH	AH	AH	AH	AH	AH	AH		
18	249	Mahalaxmi	MH	MH	MH	MH	MH	MH	MH	MH	MH	MH		
19	261	Sushma.Biradar	SB	SB	SB	SB	SB	SB	SB	SB	SB	SB		
20	281	Parvati.Dalavayi	PD	PD	PD	PD	PD	PD	PD	PD	PD	PD		
21	297	Sachin.Sajjan	SS	SS	SS	SS	SS	SS	SS	SS	SS	SS		
22	318	Basavaraj.Patil	BP	BP	BP	BP	BP	BP	BP	BP	BP	BP		
23	348	Basavaraj.gobbi	BB	BB	BB	BB	BB	BB	AB	AB	BB	BB		
24	380	Akshaykumar.Tolanur	AT	AT	AT	AT	AT	AB	AT	AB	AT	AT		
25	398	Sharanu.Muragond	SM	SM	SM	SM	SM	SM	SM	SM	SM	SM		
26	433	Shankarayya.Hiremath	SH	SH	SH	SH	AB	AB	SH	SH	SH	SH		
27	504	Swapna.Bandargatti	BS	BS	BS	AB	AB	BS	BS	BS	AB	BS		
28	516	Neha.Chougule	NC	NC	NC	NC	NC	NC	NC	NC	NC	NC		
29	528	Shambhavi.Bhushetti	SB	SB	SB	SB	SB	SB	SB	SB	SB	SB		
30	543	Apoorva.Hirolli	AH	AH	AH	AB	AB	AH	AB	AB	AB	AB		

Apali
 Head of the
 Department of Zoology,
 S.B.Arts & K.C.P.Sc. College,
 VIJAYAPUR.

IQAC, Co-ordinator
 S.B.Arts & K.C.P.Science College,
 Vijayapur.

Principal,
 S.B. Arts and KCP Science College
 VIJAYAPUR



B.L.D.E.ASSOCIATION'S
S. B. ARTS AND K. C. P. SCIENCE COLLEGE, VIJAYAPUR
ACCREDITED at 'A' Grade in 3rd Cycle by NAAC

Phone: (08352) – 261766, (08352) 262770 Extn. 2223, 2224

Fax: 08352 – 261766 E-mail: bldeasbkcp@gmail.com

Web: www.bldeasbkcp.org



Date: 02.04.2018

DEPARTMENT OF ZOOLOGY
CAREER ORIENTED PROGRAMME (C.O.P)
SERICULTURE
NOTICE

All the students of B.Sc I sem who have enrolled their names for COP-
Course in Sericulture are here by informed to attend the examination to be held
on the below dates.

	Paper	Date	Time
Theory	Paper-I	25.04.18	09.00am-12.00pm
	Paper-II	26.04.18	09.00am-12.00pm
Practical	Paper-I	27.04.18	10.00am-02.00pm
	Paper-II	28.04.18	10.00am-02.00pm

IQAC, Co-ordinator
S.B.Arts & K.C.P.Science College,
Vijayapur.

Head of the Department
Head of the
Department of Zoology
S.B. Arts & K.C.P. Sc. College
BIJAPUR.

Principal,
S. B. Arts & KCP Sc. College,
Bijapur

B.L.D.E. Association's
S.B. ARTS & K.C.P SCIENCE COLLEGE,
VIJAYAPUR
DEPARTMENT OF ZOOLOGY
CERTIFICATE COURSE IN SERICULTURE-2017-18
Question Paper
Paper-I
(Importance of sericulture, silkworm Biology and rearing)

Time-3 Hours

Max Marks:80

Q.I) Answer **any four** of the following:

(4X20=80 Marks)

1. Explain different methods of rearing of silkworms.
2. Explain different races of silkworms in Karnataka.
3. Describe different rearing equipments of silkworm.
4. Describe protozoan diseases of silkworm with its causative agents, symptoms and control measures.
5. Explain byproducts of sericulture.

Vpatil

Head of the
Department of Zoology,
S.B.Arts & K.C.P Sc. College,
VIJAYAPUR.

[Signature]

IQAC, Co-ordinator
S.B.Arts & K.C.P.Science College,
Vijayapur.

[Signature]

Principal,
S.B. Arts and KCP Science College,
VIJAYAPUR

B.L.D.E. Association's
S.B. ARTS & K.C.P SCIENCE COLLEGE,
VIJAYAPUR
DEPARTMENT OF ZOOLOGY
CERTIFICATE COURSE IN SERICULTURE-2017-18
QUESTION PAPER
Paper-II
(MULBERRY CROP PRODUCTION)

Time-3 Hours

Max Marks:80

Q.I) Answer **any four** of the following:

(4X20=80 Marks)

- 1.Explain different methods of harvesting of mulberry leaves.
2. Explain the bacterial diseases of mulberry with their symptoms.
- 3.Explain economics of Mulberry Production under rainfed irrigated condition
4. Explain common weeds and pests of mulberry with their control measures.
- 5.Expalin the commom pest of mulberry

Spati
Head of the
Department of Zoology,
S.B.Arts & K.C.P. Sc. College,
VIJAYAPUR.


IQAC, Co-ordinator
S.B.Arts & K.C.P.Science College.
Vijayapur.

205
Principal,
S.B. Arts and KCP Science College
VIJAYAPUR

S.B. ARTS & K.C.P SCIENCE COLLEGE, VIJAYAPUR
DEPARTMENT OF ZOOLOGY
COP- SERICULTURE


EXAMINATION RESULT

Year 2017-18

Sl.no	Roll No	Name	Theory		practical		Total
			Paper-I	Paper-II	Paper-I	Paper-II	
01	77	Pratiksha.Pattar	78	77	45	40	240
02	83	Siddu.Gaddi	70	70	42	42	224
03	94	Danamma.Hamndignur	80	80	36	39	235
04	95	Bharati.Mulwad	80	60	38	46	224
05	113	Krishnavati.Kundargi	79	82	35	38	234
06	116	Prashant.Kamble	70	60	36	36	202
07	129	Ashwini.Rathod	78	80	37	40	235
08	146	Shivanand.Biradar	78	60	38	39	215
09	151	Ashwini.Hajeri	80	65	36	38	219
10	158	Shantappa.Gundagi	78	80	39	42	239
11	160	Hemant.Rayabagi	77	75	40	33	225
12	169	Shobha.Nimbargi	77	80	42	39	238
13	195	Naveen.Hosamani	78	78	39	33	228
14	196	Shrishti.Biradar	80	80	46	45	251
15	197	Pooja.Kanamadi	60	65	38	42	205
16	207	Sushma.Heralagi	70	70	36	36	212
17	222	Akash.Hiremth	80	74	40	38	232
18	249	Mahalaxmi	87	80	39	35	241
19	261	Sushma.Biradar	70	70	38	36	214
20	281	Parvati.Dalavayi	75	78	42	37	232
21	297	Sachin.Sajjan	80	60	33	38	211
22	318	Basavaraj.Patil	78	80	39	36	233
23	348	Basavaraj.gobbi	79	70	33	39	221
24	380	Akshaykumar.Tolanur	70	70	45	40	225
25	398	Sharanu.Muragond	75	86	42	42	245
26	433	Shankarayya.Hiremth	80	80	48	47	255
27	504	Swapna.Bandargatti	70	70	36	40	216
28	516	Neha.Chougule	80	80	39	39	235
29	528	Shambhavi.Bhushetti	60	80	35	38	213
30	543	Apoorva.Hirolli	80	78	40	42	240


IQAC, Co-ordinator
S.B.Arts & K.C.P.Science College,
Vijayapur.

195
Principal,
S. B. Arts & KCP Sc. College,
Bijapur


Head of Department
Department of Zoology
S.B. Arts & K.C.P. Sc. College,
BIJAPUR.

**B.L.D.E Association's
SB ARTS & K.C.P.SCIENCE COLLEGE BIJAPUR
DEPARTMENT OF ZOOLOGY
CAREER ORIENTED PROGRAMME (C O P)
SERICULTURE**

REPORT

As per the curriculum the department of Zoology has conducted the career oriented programme for B.sc I year students on Sericulture for the academic year 2017-18. The duration of certificate course is one year. Theory and practical classes were conducted for 30 students who have enrolled their names for the course.

The Students are taken to Shivangi and surrounding village of manguli for the study of different stages of silkworm development and mulberry plantation. Students also visited the reeling centre at vijayapur. Sericulture is one the career option where the scope for employment in government and private sector is high. The main aim of the course provide the full proof knowledge and Maintaining and marketing of silk. It also provide gainful employment, economic development and improvement in the quality of life to the Students in rural area and therefore it plays an important role in anti poverty programme and prevents migration of rural people to urban area in search of employment. The career option in this field is never ending due to the constant production, manufacturing and selling of silk clothes.

Spatil

Head of the
Department of Zoology,
S.B.Arts & K.C.P. Sc. College,
VIJAYAPUR.



IQAC, Co-ordinator
S.B.Arts & K.C.P.Science College,
Vijayapur.



Principal,
S.B. Arts and KCP Science College
VIJAYAPUR



Prof. Bagali Explaining the students about the Importance of sericulture



IQAC, Co-ordinator
B.Arts & K.C.P.Science College,
Vijayapur.

Dr. Apabil
Head of the
Department of Zoology,
S.B.Arts & K.C.P. Sc. College,
VIJAYAPUR.

Principal,
S.B. Arts and KCP Science Coll
VIJAYAPUR



BLDE Association's
S.B. Arts & K.C.P. Science College, Vijayapur-586103
(Affiliated to RCU, Belagavi)

Re-accredited at "A" Level in Third Cycle by NAAC



DEPARTMENT OF ZOOLOGY

CAREER ORIENTED PROGRAMME (Add on Course)

Certificate

This is to certify that Shri/ ~~smt~~ *Hemant* *Rayabagi*.....
has successfully completed Certificate Course in **Sericulture** Conducted
by Department of Zoology, BLDEA's S B Arts and K C P Science College,
Vijayapur during year 2017 -2018


Principal,
S.B. Arts and KCP Science College
VIJAYAPUR


Coordinator/HOD


IQAC, Co-ordinator
S.B. Arts & K.C.P. Science College
Vijayapur.


Principal

Date: 29/06/2018



BLDE Association's

S.B. Arts & K.C.P. Science College, Vijayapur-586103

(Affiliated to RCU, Belagavi)

Re-accredited at "A" Level in Third Cycle by NAAC



DEPARTMENT OF ZOOLOGY

CAREER ORIENTED PROGRAMME (Add on Course)

Certificate

This is to certify that ~~Shri~~ ^{Kumari} ~~Smt~~ ^{Smt} Shobha Nimbargi.....
has successfully completed Certificate Course in **Sericulture** Conducted
by Department of Zoology, BLDEA's S B Arts and K C P Science College,
Vijayapur during year 2017-2018

Date: 29/06/2018


Principal,
S.B. Arts and KCP Science College
VIJAYAPUR


Coordinator/HOD


IQAC, Co-ordinator
S.B.Arts & K.C.P.Science College,
Vijayapur.


Principal



BLDE Association's
S.B. Arts & K.C.P. Science College, Vijayapur-586103

(Affiliated to RCU, Belagavi)

Re-accredited at "A" Level in Third Cycle by NAAC



DEPARTMENT OF ZOOLOGY

CAREER ORIENTED PROGRAMME (Add on Course)

Certificate

This is to certify that ^{Kumar} Sri/ Smt. Ashwini. Hajeri.....
has successfully completed Certificate Course in **Sericulture** Conducted
by Department of Zoology, BLDEA's S B Arts and K C P Science College,
Vijayapur during year 2017-2018


Principal,
S.B. Arts and KCP Science College
VIJAYAPUR

Date: 29/06/2018


Coordinator/HOD


IQAC, Co-ordinator
S.B.Arts & K.C.P.Science College,
Vijayapur. Principal

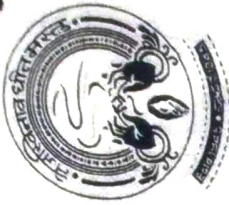


BLDE Association's

S.B. Arts & K.C.P. Science College, Vijayapur-586103

(Affiliated to RCU, Belagavi)

Re-accredited at "A" Level in Third Cycle by NAAC



DEPARTMENT OF ZOOLOGY

CAREER ORIENTED PROGRAMME (Add on Course)

Certificate

ಕುಸ್ತುರಿ ಪ್ರತಿಕ್ಷಿಣಾ ಪಾಟಾಣಿ

This is to certify that **Shrii/ Smt. Pratiksha Pattar**.....
has successfully completed Certificate Course in **Sericulture** Conducted
by Department of Zoology, BLDEA's S B Arts and K C P Science College,
Vijayapur during year 2017-2018


Principal,

S.B. Arts and KCP Science College
VIJAYAPUR
Coordinator/HOD


Principal

IQAC, Co-ordinator
S.B.Arts & K. C.P.Science College,
Vijayapur.

Date: 29/06/2018



BLDE Association's
S.B. Arts & K.C.P. Science College, Vijayapur-586103

(Affiliated to RCU, Belagavi)

Re-accredited at "A" Level in Third Cycle by NAAC



DEPARTMENT OF ZOOLOGY

CAREER ORIENTED PROGRAMME (Add on Course)

Certificate

This is to certify that ~~Shri/~~ ^{Kumar} Smt. Ashwini Rathod.....
has successfully completed Certificate Course in **Sericulture** Conducted
by Department of Zoology, BLDEA's S B Arts and K C P Science College,
Vijayapur during year 2017-2018


Principal,
S.B. Arts and KCP Science College
VIJAYAPUR


Coordinator/HOD


IQAC, Co-ordinator
S.B.Arts & K.C.P.Science College,
Vijayapur.


Principal

Date: 29/06/2018