

B.L.D.E Association's  
S.B. Arts and K.C.P. Science College,  
Vijayapur (Karnataka )

**DEPARTMENT OF**  
**CHEMISTRY**

**BEST PRACTICE**  
**2018-19**

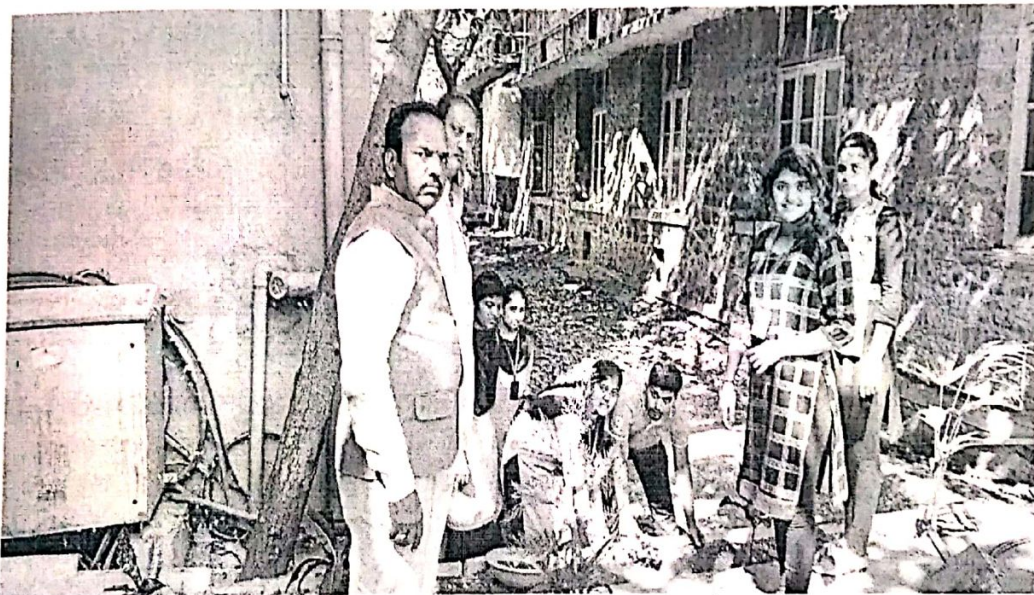
**MAINTAINING COLLEGE GARDEN AND**  
**COLLEGE CAMPUS**

## Maintaining College Garden and college campus

Gardening is an exciting adventure for students, but it is not without its challenges. The good thing is that students can learn as much (and sometimes more) from garden problems as they can from garden success.

### Planting the Garden:

- 1) **Transplants** –Plant the transplants directly in the ground , as the ground is still warm from the summer and plant growth will be easy. Plant growth becomes difficult in the winter as nighttime temperatures fall below 50 degrees.



*Planting the transplants.*

2) **What to grow and when to grow it** – We have two seasons in a college garden before the winter break, and after the winter break.

3) **Lay out rows** – We make rows to plant the transplants. Lay out rows perpendicular to the arc of the sun.

4) **Planting Day** –While planting, depth is important. See Bed must never dry out during the plantation. In the beginning we need to water nearly every day.

### Maintenance:

- 1) **Thinning** – Put two students back to back and ask if they would like to live their entire lives like that. Plants need room to grow as well. No two plants can occupy the same space. Carefully remove one by cutting it off at the soil line. You don't want to pull it out as you may pull out both.

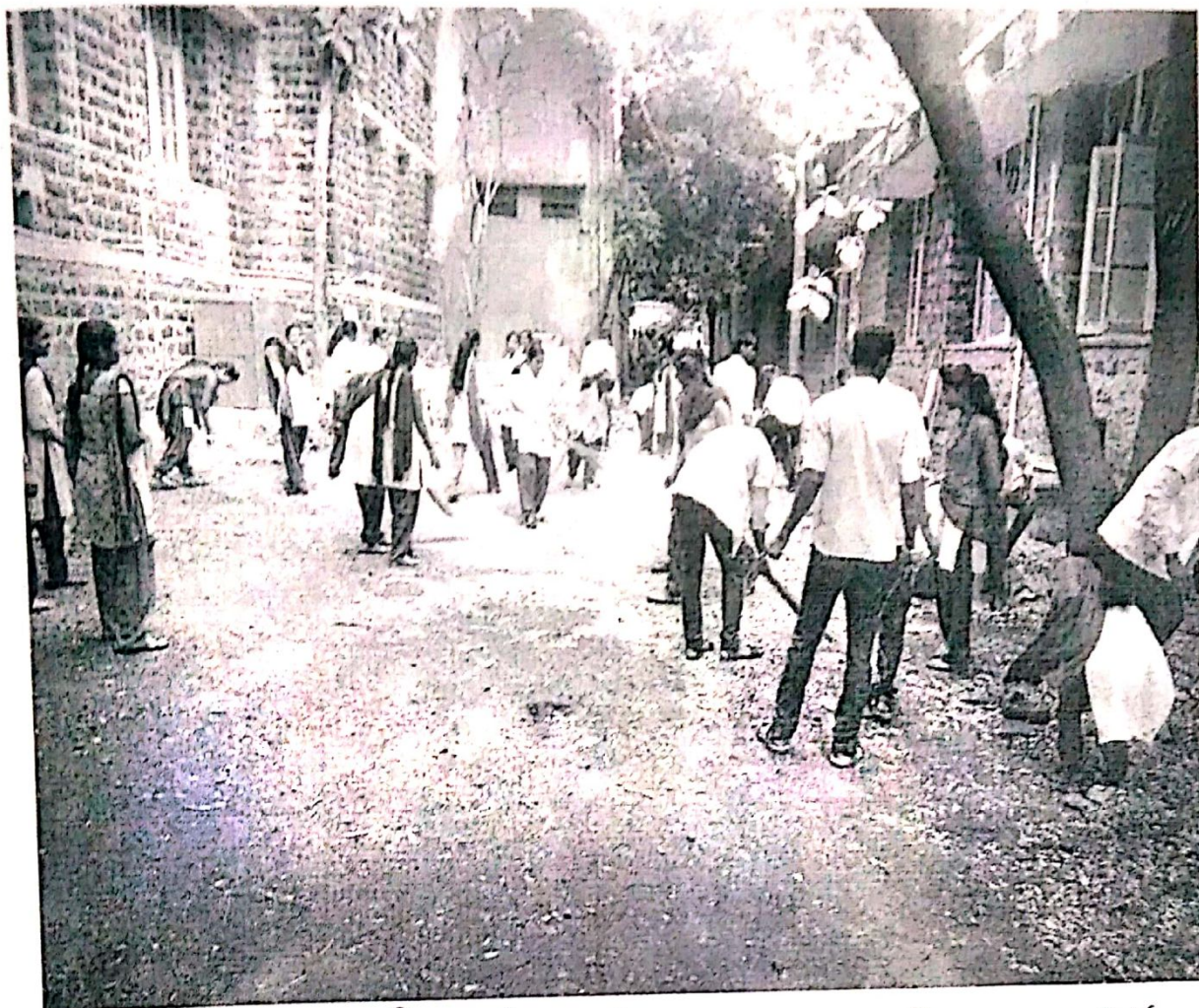


Students cleaning the college campus.

2) **Mulching** – We mulch to suppress weeds, to keep the soil warm in the winter, and to preserve moisture in the spring. Lay down some sheets of newspaper between rows and cover with compost, hay, or mulch from the city. Mulch can be turned into the soil the following season.

3) **Fertilization** – Compost is the best organic fertilizer. When compost is used for mulching the nutrients filter into the ground whenever it is watered. Another excellent organic fertilizer is worm tea (for any of you with worm bins).

4) Pests – Be very observant, check the underside of leaves. Slugs and snails are deterred by surrounding seedlings with a ring of eggshells. Any diseased plants should be thrown away and not put into the compost bin.



Students cleaning the college campus.

**Head**  
Dept. of Chemistry  
SB Arts & KCP Sc. College  
Vijayapur.

**IQAC, Co-ordinator**  
S.B.Arts & K.C.P.Science College,  
Vijayapur.

**Principal,**  
S.B. Arts & K.C.P. Sc. College  
Bijapur.